

**HYUNDAI**

ALUMINIUM COMPOSITE PANEL





## SOUL OF THE CITIES

Cities have their own soul which is a blend of their founder's art, beliefs and wealth, and consisting of their very own culture filtered through the centuries. The buildings we live in, rest, collect memories are all reflections of this soul. Monumental buildings that draw the silhouette of the city contribute to identity of the city. Monumental buildings add a significant prestige to every aspect they are in relation. Wall claddings that add prestige to companies certainly add exceptional significance to visuality.









## HYUNDAI ALUMINIUM COMPOSITE PANEL

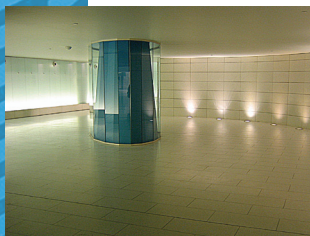
All urban furnitures we see in the streets, parks and sidewalks, and the buildings we daily use like schools, hospitals, restaurants, banks, shopping / bussiness centers, leisure places all raise the affection for the city, citizen consiciousness and social taste level.

Hyundai Aliminium Composite Panel is being the reliable assistant to those who design cities and buildings. In every step of your bussiness and continuous ly it is on your side with friendly support at the very beginning, wide range of colour options and effective after-sales services.

Among all kinds of cladding solutions, Hyundai will be an effective material to perform your aesthetics efforts as in inner space designs, lobbies and foyers, wall, colon and ceiling claddings, seperate wall structures, receptions, various seperators and in almost every related aspect you can think of.

Hyundai is an economic and long term solution beyond your expectations, in your constructions as well as its aesthetic appearance and functionality.

With its rich composition details, Hyundai will let you create authentic concepts in buildings which reflect exactly your style.









## RETROFIT FACADES & WALL CLADDING

HYUNDAI is an aluminum composite material for exterior wall cladding for new construction or renovation in commercial, industrial and similar applications.

HYUNDAI As an exterior renovation becomes more common across all over the world, architects, contractors and subcontractors are learning more about its requirements for success. These thermally efficient, acoustical materials are excellent choices for both the retrofit and new construction markets.

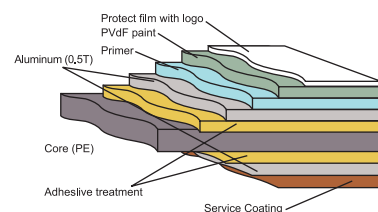
Along with its elegant look and durability, HYUNDAI aluminum composite material is UL labeled, making it ideal for use in health care facilities, offices, hotels, retail or commercial buildings and any place where surfaces require decorative protection from daily abuse.

HYUNDAI is a sandwich - type composite panel consisting of a non-toxic polyethylene core firmly bonded between fine aluminium facing and hacking sheets.

HYUNDAI sheets are produced in different core thickness 2, 3, 5, mm with aluminium thickness 0.50 mm in 1000, 1250, 1500 and 2000 mm widths and lengths from 1000 to 5000 mm. The total thickness of HYUNDAI is 3, 4, 6 mm.

The bonding of aluminium sheets with the core is accomplished by simultaneous application of mechanical and chemical methods under high temperatures.

The final stage of production results in a strong and exceptionally rigid flat sheet of composite panel of which the total thickness can vary from 3 to 6 mm. HYUNDAI is a technologically advanced product whose unique features fit in a variety of applications.









HYUNDAI APPLICATION AREAS

Architectural applications

- Exterior wall claddings
- Renewing the exteriors
- Colon, beam, front, eaves, ceiling cladding
- Parapets
- Gas and service stations
- Banks, showrooms, supermarkets

Inner & exterior decoration

- Industrial and exclusive applications
- Company signboards and totems
- Exhibition, gallery and fair stands
- Kiosks
- ATM cabinets
- Urban furniture
- Special designs and textile accessories

High technology applications

- Aircraft Industry
- Ship building
- Automotives
- Speed trains
- Containers
- Elevators
- White goods

Thickness and weight comparison of panels with the same hardness

Hyundai	4 mm	5,5 kg	<div></div>
Aluminium	3,3 mm	8,9kg	<div></div>
Steel	2,4 mm	18,7 kg	<div></div>

Hardness	Cutting resistance module	Hyundai	Aluminium	Steel
0. 125 kN m²/m	1.25 cm³/m	3 mm - 4,5 kg	2,7 mm - 7,3 kg	1,9 mm - 14,8 kg
0. 240 kN m²/m	1.75 cm³/m	4 mm - 5,5 kg	3,3 mm - 8,9 kg	2,4 mm - 18,7 kg
0. 509 kN m²/m	2.75 cm³/m	6 mm - 7,3 kg	4,5 mm - 12,2 kg	3,2 mm - 25,0 kg







## HYUNDAI COMPOSITE PANEL FEATURES



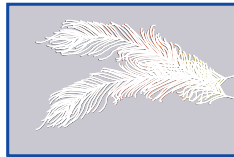
### High Technology

It is a material formed by plastic filling between two 0.50 mm. aluminium panels. Either one or both sides can be coloured. Produced with continuous production technology with core thickness varying from 3 mm. to 6 mm. and cut to desired size. Coated side is produced and packed with a protective foil on.



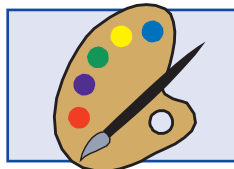
### Smooth Surface

The material produced with continuous production line has a perfectly smooth surface. Coated side is covered with protective foil in order to prevent scratches and dust during the process of application.



### Lightness

It is 60% lighter than solid aluminium with same thickness. This feature reduces the building's load and provides security in possible earthquakes.



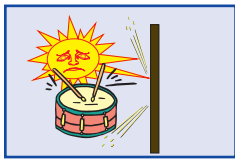
### Color Variations

Wide range of colors. Produced with coil coating technology which preserves high color quality. No color change and thickness occurs in surfaces. PDVF color, polyester paint and lacquer durable to all climate conditions is used. Can be produced in desired optional colors besides the known ones.



**Endurance**

Extremely durable to strokes, pressure and breaking. Very resistant to climate effects on exteriors. It has long- years of endurance to the discoloring sun light, acid rains, and corrosion effects of humid weather.

**Noise and temperature insulation**

Due to its composite structure, it has much better noise insulation when compared to the steel, aluminium and plywood. Resistant to high and low temperatures. Although not considered as temperature insulator, its heat insulation value is close to the heat insulation value of polyethylene.

**Easy Shaping**

Appearance design is easy to form as well as its durable and firm material. Can be cut with wood processing machines. Available to form by bending with hand. Convenient to form circular shapes.

**Environmentally Friendly**

All materials Hyundai Aluminium Composite Panel is composed of are recyclable. No toxic material is set free during the production, application and usage.

**Economic**

Provides long term usage with its endurance and strength. Eliminates economic loss like maintenance, renewal and repairing. Reduces time costs due to its easy shaping and easy application features.



도시들은 자신의 건립자의 예술, 신념과  
유물의 혼합 속에서 수세기에 걸쳐  
여과된 그들만의 문화로 된 혼을 가진다.  
우리가 살고 쉬며 자라며 기억을 모이게  
하는 건물들은 이 영혼의 모든 반영이다.  
도시의 윤곽을 그리는 기념비적인  
건물들은 도시의 정체성 확립에  
공헌한다. 기념비적인 건물들은 그들과  
관계가 있는 모든 면에 나타나는 명성을  
높여준다. 기업의 명성을 높여주는 건물  
전면 치장은 심상에 확실히 특별한  
의미를 더해준다.

Cities has their own soul which is a blend  
of their founder's art, beliefs and  
wealth, and consisting of their  
very own culture filtered through  
the centuries. The buildings we  
live in, rest, collect memories  
are all reflections of this soul.  
Monumental buildings that draw  
the silhouette of the city  
contribute to identity  
of the city. Monumental  
buildings add a significant  
prestige to every aspect they  
are in relation. Wall claddings  
that add prestige to companies  
certainly add exceptional significance  
to visually.



**HYUNDAI**  
ALUMINIUM COMPOSITE PANEL